

Product  
Catalog

# C A T V ENCLOSURES

## CATV Outdoor Amplifier Enclosures

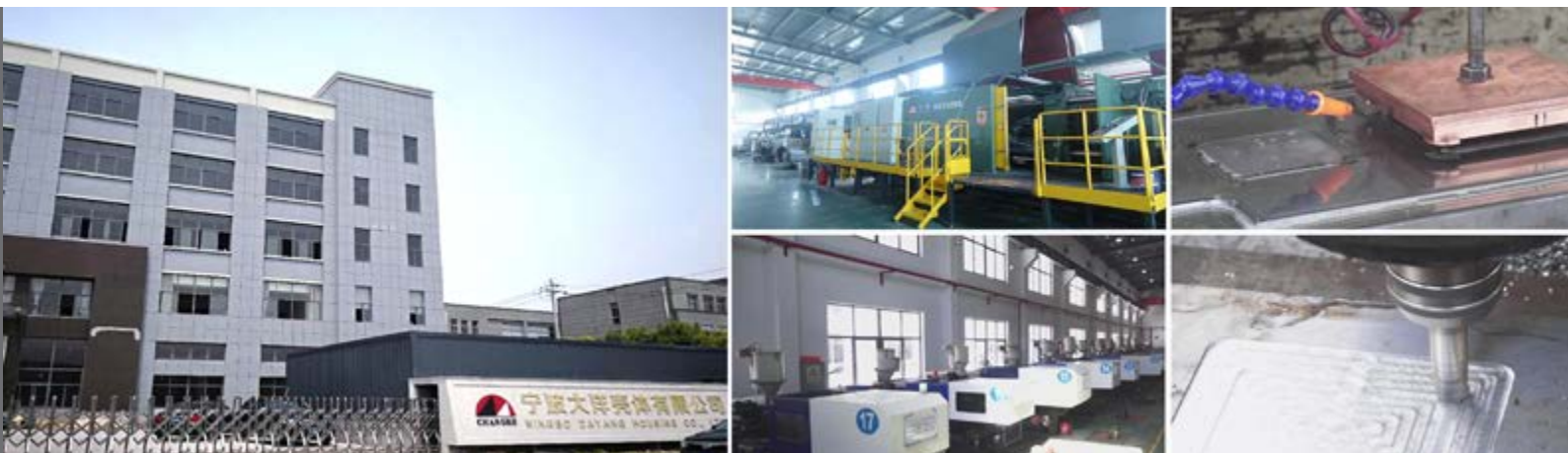


**CHANGHE ENCLOSURES**

# ABOUT US

---

Founded in 1997, CHANGHE has developed to be a leading enclosure manufacturer in China. With 230 dedicated employees and 26700 square meters of manufacturing facilities, we have achieved annual production capacity of 15,000,000 USD: over 500,000 enclosures and 500 units of plastic injection/aluminum die casting mold.



## “YOUR ONE STOP SOLUTION FOR THE IDEAL ENCLOSURE CUSTOMIZATION”

### Broad product line

---

With over 3,000 products for electronic components, product line of CHANGHE ranges from waterproof electronic enclosures, protective cases, din rail enclosures, extruded aluminum enclosures, console enclosures, desktop enclosures, to CATV amplifier enclosures.

### Production capacity

---

Our ISO 9001:2015 certified factory is equipped with over 120 production machinery, including aluminum die casting machines (max. 1250 ton), plastic injection machines (max.6300g), forging press (max. 100 ton), CNC punching machines, bending machines, drilling/milling and laser cutting machines.

### Added value

---

The significant role of manufacturing flexibility makes it a part of our strategy. CHANGHE Enclosures endeavor to provide personalized customization based on our precision machining, advanced surface coating and assembling capacities.

# MAIN PRODUCTS

---



Aluminum Desktop Enclosures



Aluminum & Plastic Desktop Enclosures



Plastic Waterproof Enclosures



Plastic Electronic Enclosures



Aluminum Waterproof Enclosures



Aluminum Control Boxes



CATV Amplifier Enclosures



Telecom Enclosures



PP Protective Cases



ABS Protective Cases



DIN Rail PLC Enclosures



DIN Rail Terminal Enclosures



Waterproof Extruded Enclosures



Aluminum Extruded Enclosures



Handheld Enclosures

# CUSTOMIZATION SERVICE

---



## Customization

When customization is required for your specific application, CHANGHE enclosures is your competent partner. Thanks to our in-house customization facility, we are able to offer you 'one stop solution' for the ideal enclosure customization. For cooperative new product development, a 50% discount of molding fee is offered.

01

### MOLD FABRICATION

CHANGHE provides cost-effective solution for mold design and fabrication, including plastic injection mold, aluminum die casting mold, and sheet metal stamping dies.

02

### CUT-OUTS

On your request, our high-qualified team can process drilling, milling and thread-cutting with modern CNC machines.

03

### SILK-SCREEN PRINTING

We also offer screen printing for labelling or adding logos, a process that gives your enclosures a personal touch.

04

### SHIELDING MATERIAL

On request, our tech support team can recommend shielding materials for aperture, membrane, display window, vent holes and cable holes.

05

### COLOR ADJUSTMENTS

We can apply your corporate colors so that enclosures appear as unique as you would like them to be.



# OUR WEBSITE YOUR PORTAL

[www.changhe-enclosures.com](http://www.changhe-enclosures.com)

Find the products you've been looking for with our website. It gives a more detailed view of each model with all information required for ordering products.



Online product catalog

On the product detail page, we've listed a range of relevant information: technical data, product features, standard components and accessories



PDF drawings

PDF drawings are available for download



Product search filter

Different search criteria support you in the selection of your products: by category, by dimensions, by IP rating and by materials.

# CATV Enclosures

11B Series



## Technical Data

### Technical Data:

Ingress protection:	IP65	IEC60529 : 2001
Impact protection:	IK08	IEC62262 : 2002
Temperature range (short term):	-40°C~120°C	IEC60068 : 1997
Temperature range (long term):	-20°C~80°C	IEC60068 : 1997
EMI shielding:	good	
Chemical resistance:	good	
RFI shielding:	good	



Detailed product information  
can be found on:  
[www.changhe-enclosures.com](http://www.changhe-enclosures.com)

### Material:

Cover:	die casting aluminum
Base:	die casting aluminum
Screws:	stainless steel
Sealing ring:	silicon rubber
Standard color:	cover/base: grey

# Dimension chart

Measurement: mm

Product No.	Exterior size LxWxH	Interior size LxWxH	Mounting plate size LxW	Wall-mounting size LxW
11B-4		130×90×75	120×82	
11B-6		168×87×72	165×85	
11B-10		210×130×58	205×125	140
11B-11		211×132×87	210×130	138
11B-13		255×146×81	251×145	
11B-14		316×165×130	310×157	205
11B-24		473×324×138	460×320	
11B-29		300×180×98	285×165	260×150
11B-30		258.5×213×100	249×200	220×120
11B-41		209×129×90	200×125	140
11B-42		183×140×50	180×135	120
11B-51		420×335×126	410×335	350×285
11B-52		410×280×112.5	400×270	350×210
11B-53		184.5×127×63	180×123	213
11B-54		184.5×127×63	180×123	213
11B-55		200×185×75.5	195×180	230
11B-56		246×196×187	237×187	285
11B-58				
11B-59				

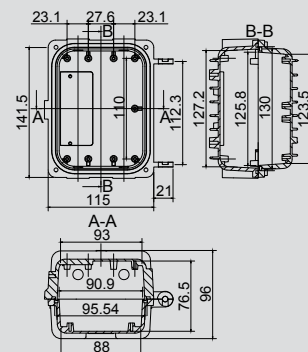
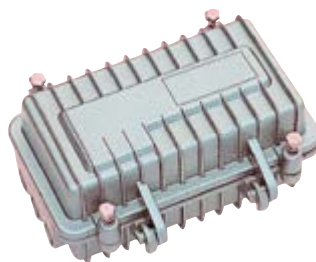
Our customization services include: 1. custom colors 2. fire-retardant materials 3. cut out 4. customized molding

**11B-4 130x90x75**

**Standard components**  
 Cover: 1 piece  
 Base: 1 piece  
 Sealing ring: 1 piece  
 Metal screw: 5 pieces  
 Insulation net: 1 piece

Our customization services include:

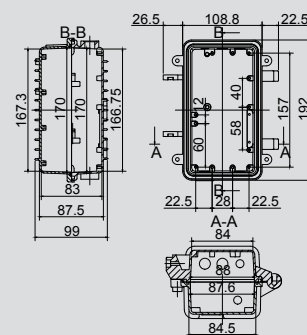
1. custom colors
2. fire-retardant materials
3. cut out
4. customized molding

**11B-6 168x87x72**

**Standard components**  
 Cover: 1 piece  
 Base: 1 piece  
 Sealing ring: 1 piece  
 Metal screw: 6 pieces  
 Insulation net: 1 piece

Our customization services include:

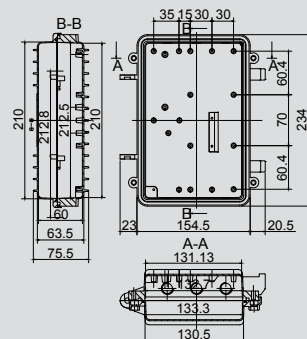
1. custom colors
2. fire-retardant materials
3. cut out
4. customized molding

**11B-10 210x130x58**

**Standard components**  
 Cover: 1 piece  
 Base: 1 piece  
 Sealing ring: 1 piece  
 Metal screw: 6 pieces  
 Insulation net: 1 piece

Our customization services include:

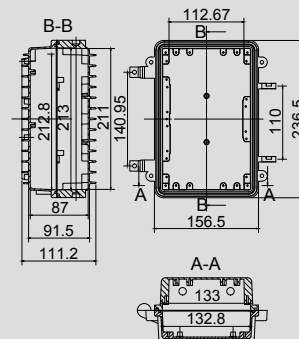
1. custom colors
2. fire-retardant materials
3. cut out
4. customized molding

**11B-11 211x132x87**

**Standard components**  
 Cover: 1 piece  
 Base: 1 piece  
 Sealing ring: 1 piece  
 Metal screw: 6 pieces  
 Insulation net: 1 piece

Our customization services include:

1. custom colors
2. fire-retardant materials
3. cut out
4. customized molding



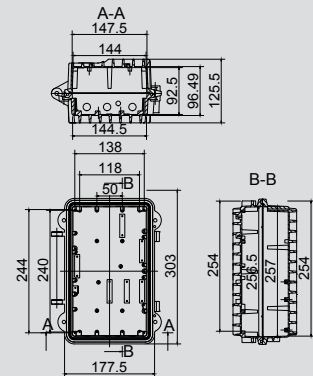


## 11B-13 255x146x81



Standard components  
 Cover: 1 piece  
 Base: 1 piece  
 Sealing ring: 1 piece  
 Metal screw: 4 pieces  
 Insulation net: 1 piece

Our customization services include:  
 1. custom colors  
 2. fire-retardant materials  
 3. cut out  
 4. customized molding

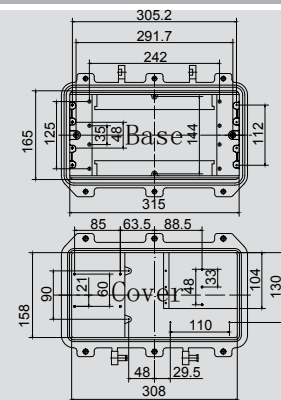


## 11B-14 316x165x130



Standard components  
 Cover: 1 piece  
 Base: 1 piece  
 Sealing ring: 1 piece  
 Metal screw: 10 pieces  
 Insulation net: 1 piece

Our customization services include:  
 1. custom colors  
 2. fire-retardant materials  
 3. cut out  
 4. customized molding

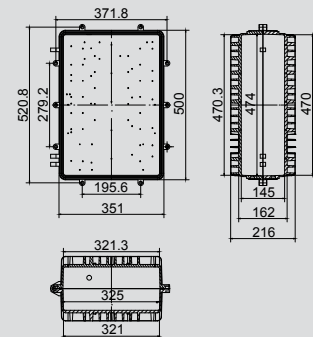


## 11B-24 473x324x138



Standard components  
 Cover: 1 piece  
 Base: 1 piece  
 Sealing ring: 1 piece  
 Metal screw: 10 pieces  
 Insulation net: 1 piece

Our customization services include:  
 1. custom colors  
 2. fire-retardant materials  
 3. cut out  
 4. customized molding

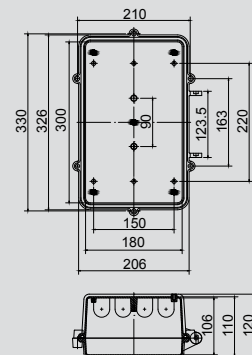


## 11B-29 300x180x98



Standard components  
 Cover: 1 piece  
 Base: 1 piece  
 Sealing ring: 1 piece  
 Metal screw: 6 pieces

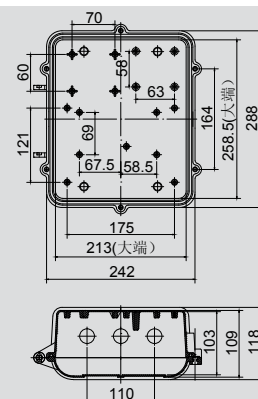
Our customization services include:  
 1. custom colors  
 2. fire-retardant materials  
 3. cut out  
 4. customized molding



**11B-30 258.5x213x100**

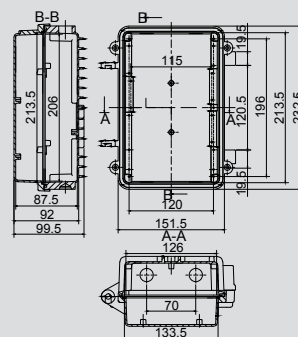
Standard components  
 Cover: 1 piece  
 Base: 1 piece  
 Sealing ring: 1 piece  
 Metal screw: 6 pieces

Our customization services include:  
 1. custom colors  
 2. fire-retardant materials  
 3. cut out  
 4. customized molding

**11B-41 209x129x90**

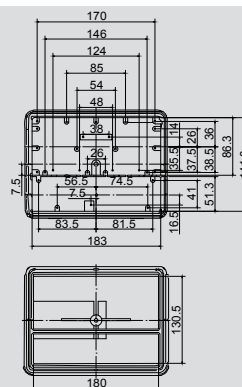
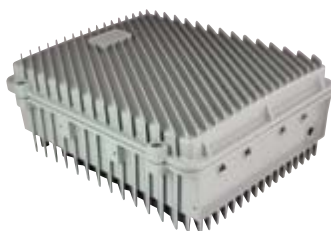
Standard components  
 Cover: 1 piece  
 Base: 1 piece  
 Sealing ring: 1 piece  
 Metal screw: 6 pieces  
 Insulation net: 1 piece

Our customization services include:  
 1. custom colors  
 2. fire-retardant materials  
 3. cut out  
 4. customized molding

**11B-42 183x140x50**

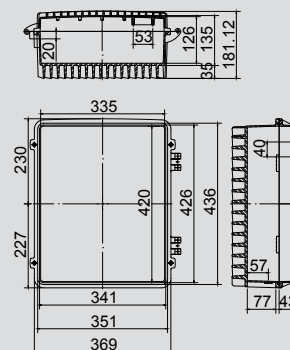
Standard components  
 Cover: 1 piece  
 Base: 1 piece  
 Sealing ring: 1 piece  
 Metal screw: 3 pieces  
 Insulation net: 1 piece

Our customization services include:  
 1. custom colors  
 2. fire-retardant materials  
 3. cut out  
 4. customized molding

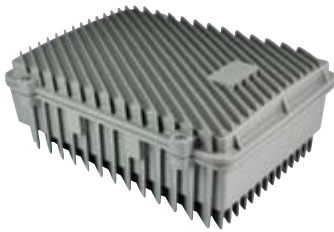
**11B-51 420x335x126**

Standard components  
 Cover: 1 piece  
 Base: 1 piece  
 Sealing ring: 1 piece  
 Metal screw: 4 pieces  
 Insulation net: 1 piece

Our customization services include:  
 1. custom colors  
 2. fire-retardant materials  
 3. cut out  
 4. customized molding

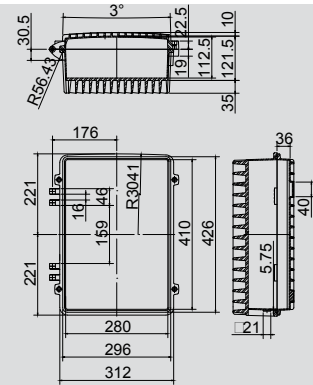


## 11B-52 410x280x112.5



**Standard components**  
 Cover: 1 piece  
 Base: 1 piece  
 Sealing ring: 1 piece  
 Metal screw: 4 pieces  
 Insulation net: 1 piece

Our customization services include:  
 1. custom colors  
 2. fire-retardant materials  
 3. cut out  
 4. customized molding

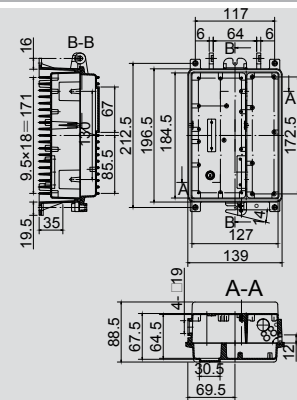


## 11B-53 184.5x127x63



**Standard components**  
 Cover: 1 piece  
 Base: 1 piece  
 Sealing ring: 1 piece  
 Metal screw: 4 pieces  
 Insulation net: 1 piece

Our customization services include:  
 1. custom colors  
 2. fire-retardant materials  
 3. cut out  
 4. customized molding

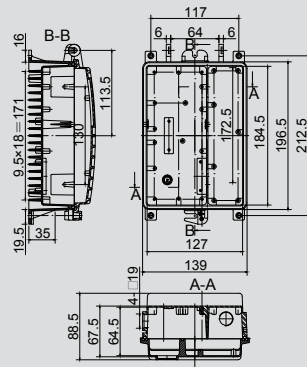


## 11B-54 184.5x127x63

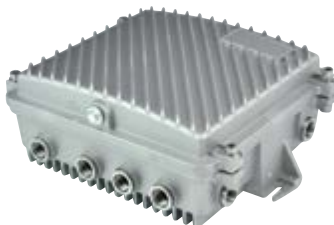


**Standard components**  
 Cover: 1 piece  
 Base: 1 piece  
 Sealing ring: 1 piece  
 Metal screw: 4 pieces  
 Insulation net: 1 piece

Our customization services include:  
 1. custom colors  
 2. fire-retardant materials  
 3. cut out  
 4. customized molding

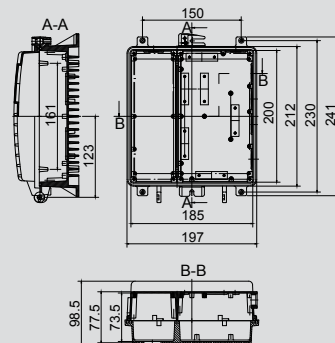


## 11B-55 200x185x75.5



**Standard components**  
 Cover: 1 piece  
 Base: 1 piece  
 Sealing ring: 1 piece  
 Metal screw: 4 pieces  
 Insulation net: 1 piece

Our customization services include:  
 1. custom colors  
 2. fire-retardant materials  
 3. cut out  
 4. customized molding



11B-56

246×196×187

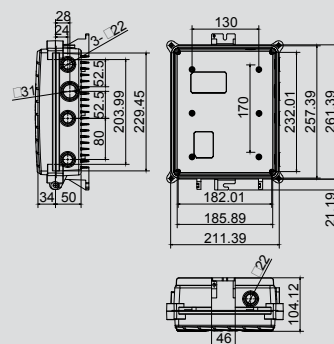


#### Standard components

Cover: 1 piece  
 Base: 1 piece  
 Sealing ring: 1 piece  
 Metal screw: 4 pieces  
 Insulation net: 1 piece

#### Our customization services include:

1. custom colors
2. fire-retardant materials
3. cut out
4. customized molding



# CHANGHE ENCLOSURES



**Ningbo Dayang Enclosures Co., Ltd**

788 Weier road, Economic development zone, Cixi, Zhejiang Province, China

[sales@changhe-enclosures.com](mailto:sales@changhe-enclosures.com)

[www.changhe-enclosures.com](http://www.changhe-enclosures.com)